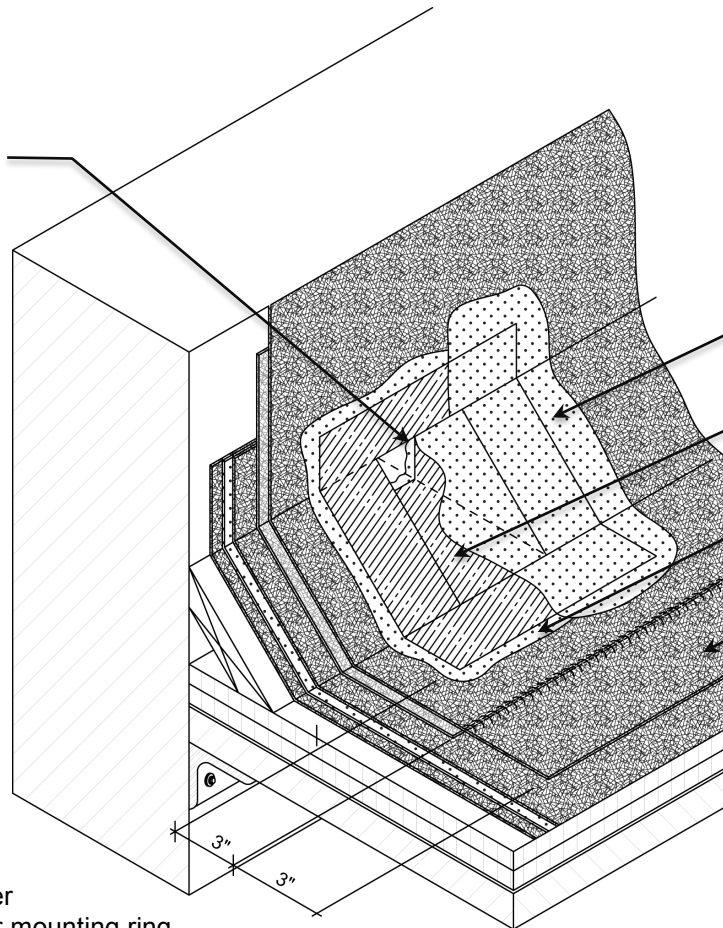


FLAT ROOF: THREE COURSE FABRIC REINFORCED

EXISTING SCUPPER ASSEMBLY



AWS FABRIC BOND COATING

AWS 6" POLYESTER FABRIC

AWS FABRIC BOND COATING

EXISTING ROOF

1. Cut several strips of AWS Polyester Fabric to a length that will extend from the interior base of existing scupper assembly to four inches (4") beyond the scupper mounting ring when reinstalled.
2. Apply AWS fabric bond coating into the existing scupper assembly to six inches (6") beyond the drain mounting ring.
3. Embed and overlap previously cut strips of AWS Polyester Fabric into the wet AWS fabric bond coating extending from the existing scupper assembly to four inches (4") beyond the scupper mounting ring ensuring that the complete circumference of the scupper sealed.
4. Apply AWS fabric bond coating into the existing scupper assembly to six inches (6") beyond the drain mounting ring, completely encapsulating the AWS Polyester Fabric.

NOTE: Scupper height to be at or below existing roof surface height. Contact American WeatherStar with any questions.



800.771.6643

AMERICANWEATHERSTAR.COM

SCUPPER RESTORATION DETAIL

See specific application guideline for suitable AWS fabric bond coating.

NOTE: This detail is provided to show a generally recommended procedure for dealing with the condition shown. It will not and cannot provide a specific solution for every condition likely to be encountered in field application. Where field conditions differ, the use of applicable portions of the detail shown or its adaptation by an experienced and conscientious applicator should result in a quality project.

LEGEND



FABRIC BOND COATING



POLYESTER FABRIC

REVISION DATE: 10/30/2015

SCALE: NTS